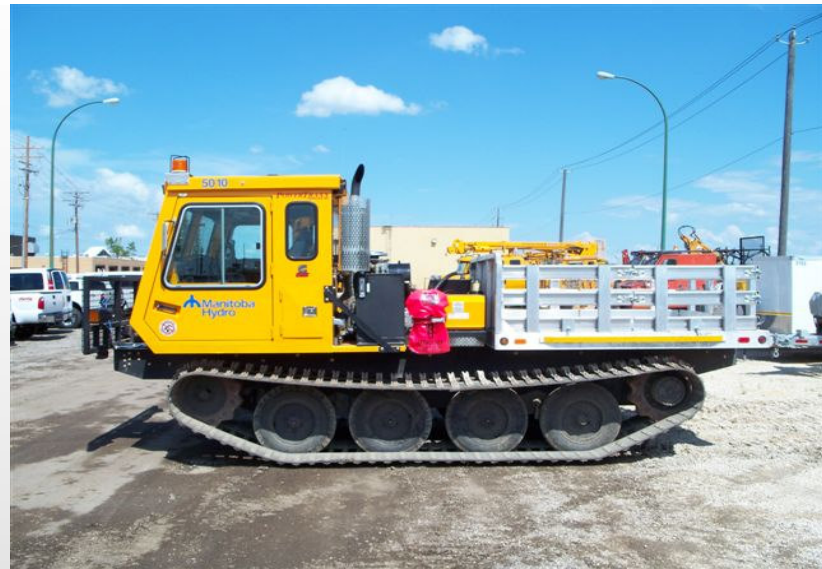




05L-H

PowerTraxx 05L-H, a multi-purpose unit can be utilized as flatbed carrier, personnel carrier, or mounted with small to medium sized digger-derricks, aerial devices, and other attachments. The 05L-H 10,000 lbs. payload capacity utilizes 33" wide D-dent tracks to evenly distribute the load for an incredibly low ground pressure rating. Its 170 hp Cummins® diesel engine helps to make this light unit quick and manoeuvrable in extreme operating conditions.



Main Dimensions

Overall Length	246"
Overall Width	99"
Overall Height	108"
Ground Clearance	17"

Weights

Basic Vehicle Weight	12,000 Lbs.
Payload Capacity	10,000 Lbs.
Gross Vehicle Weight	22,000 Lbs.
Ground Pressure – Unloaded	1.47 psi
Ground Pressure – Loaded	2.64 psi

Engine

Type	Cummins QSB, Tier 3
Capacity	4.5 Litres
Horse Power	170 @ 2100 RPM
Electrical System	12 V
Fuel Tank Capacity	40 US Gal

Drive System

Type	Hydrostatic
Location	Rear
Pump Drive	Funk, Triple Pad, Series 28000
Hydrostatic Pumps	Sauer 90 Series Variable Displacement
Hydrostatic Motors	Sauer 51 Series Two (2) Speed, Variable Displacement
Planetaries	Auburn Gear Model 9
Speed	10 mph
Drive Sprocket	12 Tooth, Steel Hub Sprocket Replaceable Urethane
Idler Sprocket	12 Tooth, Steel Hub Sprocket Replaceable Urethane

Suspension

Type	Heavy Duty Arched Walking Beams Solid Steel, Urethane Bushings
Load Wheels	650 x 16, Solid Rubber Tire, 3 Piece Steel Rim

Steering

Type	Electronic Joystick
------	---------------------

Tracks

Type	Rubber With Steel Grousers
Belts	12" x 6 ply, Goodyear Rubber
Bars	D-Dent, 33" x 1/2", Heavy Duty
Reinforcing Bar	Optional

Electrics

Alternator	160 Amp
Batteries	2 x 200 Amp Hour, 1125 CCA
Starter	4.8 kW, 12 V
Driving Lights	2 Forward, 2 Rear
Other	Back-Up Alarm, Master Switch

Cabin

Type	Single Person, Enclosed, ROPS 45,000 Lbs.
Heater	44,000 BTU With Adjustable Defrosters
Air Conditioning	Available
Other	Sunroof/Escape Hatch, One (1) Seat With Seatbelt Dome Light, Panel Lights

Instruments

Gauges	Hydrostatic Oil Temp., Voltmeter, Hourmeter, Engine Oil Pressure, Engine Temp., Fuel Level, Tachometer
--------	--

Manuals

Type	2 Parts, 2 Maintenance
------	------------------------

Optional Equipment

Cold Weather Package	Steel Flat Track
Front Winch	Rubber Covered Flat track
Dual Lever Steering	Two Person Cab

Other Options Available Upon Request